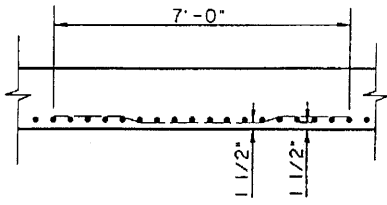
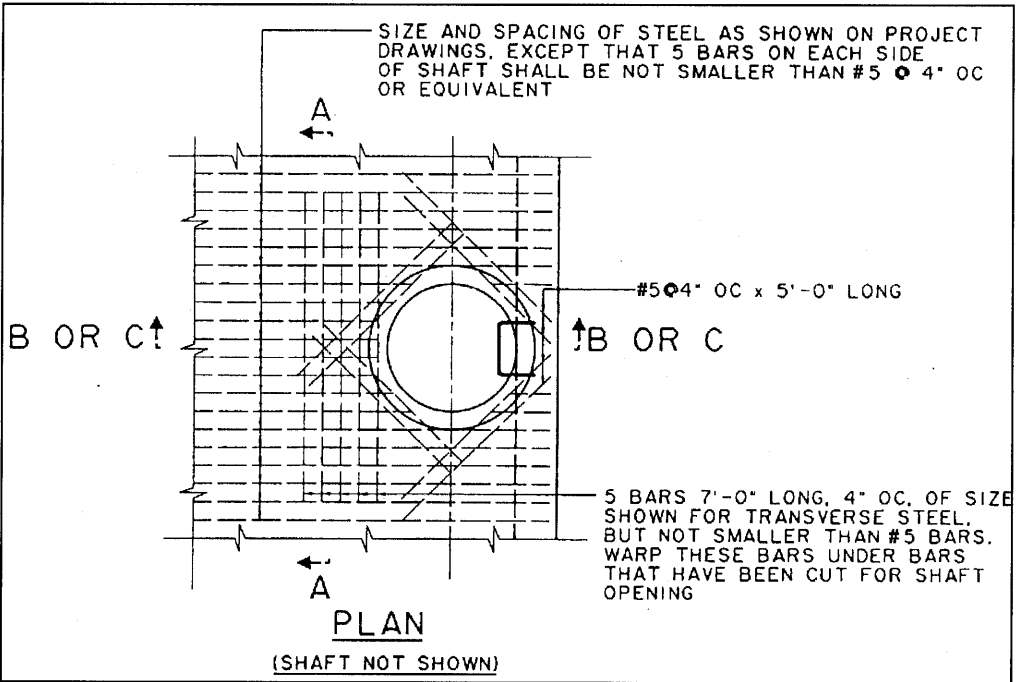
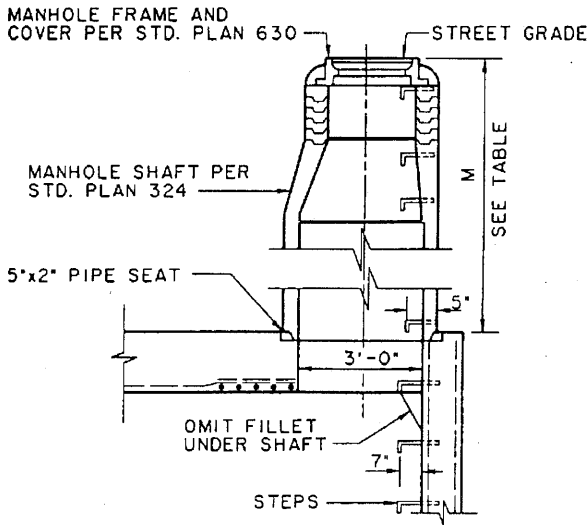


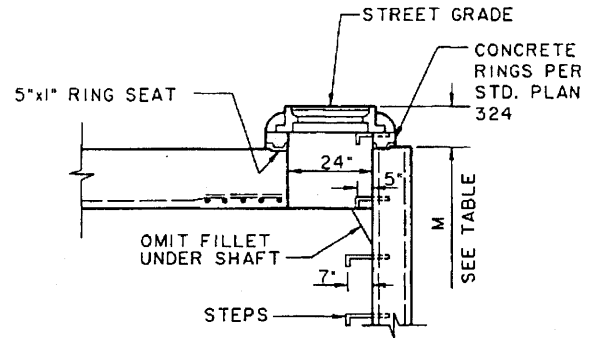
SIZE AND SPACING OF STEEL AS SHOWN ON PROJECT DRAWINGS, EXCEPT THAT 5 BARS ON EACH SIDE OF SHAFT SHALL BE NOT SMALLER THAN #5 @ 4" OC OR EQUIVALENT



SECTION A - A



SECTION B - B



SECTION C - C

SEE NOTE 1

TABLE OF VALUES FOR M (SEE NOTE 1)				
SECTION	PAVED STREET		UNPAVED STREET	
	MAX.	MIN.	MAX.	MIN.
B - B	-	2'-10 1/2"	-	3'-6"
C - C	(SEE NOTE 1)	8 1/2"	(SEE NOTE 1)	15"

A.P.W.A. STD. No. 323-0

REVISIONS:

APPROVED
08/21/01

CHRIS A. VOGT
CITY ENGINEER
RCE 44250



City of La Quinta

MANHOLE-CONCRETE BOX STORM DRAIN

STANDARD

343

SHEET 1 OF 2

NOTES


1. WHEN DEPTH M FROM STREET GRADE TO THE TOP OF THE BOX IS LESS THAN 2'-10 1/2" FOR PAVED STREETS OR 3'-6" FOR UNPAVED STREETS, CONSTRUCT SHAFT PER SECTION C-C.
2. STATIONS OF MANHOLES SHOWN ON PROJECT DRAWING, APPLY AT CENTER LINE OF SHAFT. ELEVATIONS ARE SHOWN AT CENTER LINE OF SHAFT.
3. REINFORCEMENT SHALL CONFORM TO ASTM A 615, GRADE 40, AND SHALL TERMINATE 1 1/2" CLEAR OF CONCRETE SURFACES UNLESS OTHERWISE SHOWN.
4. STEPS SHALL CONFORM TO STANDARD PLAN 635 OR 636. UNLESS OTHERWISE SHOWN, STEPS SHALL BE UNIFORMLY SPACED 14" TO 15" OC. THE LOWEST STEP SHALL NOT BE MORE THAN 24" ABOVE THE INVERT.
5. MANHOLE FRAME AND COVER SHALL CONFORM TO STANDARD PLAN 630. UNLESS OTHERWISE SHOWN.
6. MANHOLE SHAFT SHALL CONFORM TO STANDARD PLAN 324 UNLESS OTHERWISE SHOWN.
7. WHERE A MANHOLE SHAFT - 36-INCH WITHOUT REDUCER IS SPECIFIED REFER TO STANDARD PLAN 326.
8. WHERE A PRESSURE MANHOLE SHAFT - WITH ECCENTRIC REDUCER IS SPECIFIED REFER TO STANDARD PLAN 328.
9. WHERE A PRESSURE MANHOLE SHAFT - 36-INCH WITHOUT REDUCER IS SPECIFIED REFER TO STANDARD PLAN 329.

THE FOLLOWING A.P.W.A. STANDARD PLANS ARE INCORPORATED HEREIN BY REFERENCE:

- 324 MANHOLE SHAFT - WITH ECCENTRIC REDUCER
- 326 MANHOLE SHAFT - 36-INCH WITHOUT REDUCER
- 328 PRESSURE MANHOLE SHAFT - WITH ECCENTRIC REDUCER
- 329 PRESSURE MANHOLE SHAFT - 36-INCH WITHOUT REDUCER
- 630 24-INCH MANHOLE FRAME AND COVER
- 633 36-INCH MANHOLE FRAME AND COVER
- 635 STEEL STEP
- 636 POLYPROPYLENE PLASTIC STEP

A.P.W.A. STD. No. 323-0

REVISIONS:

APPROVED 08/21/01	 <i>City of La Quinta</i>	STANDARD
CHRIS A. VOGT CITY ENGINEER RCE 44250		343
MANHOLE-CONCRETE BOX STORM DRAIN		SHEET 2 OF 2