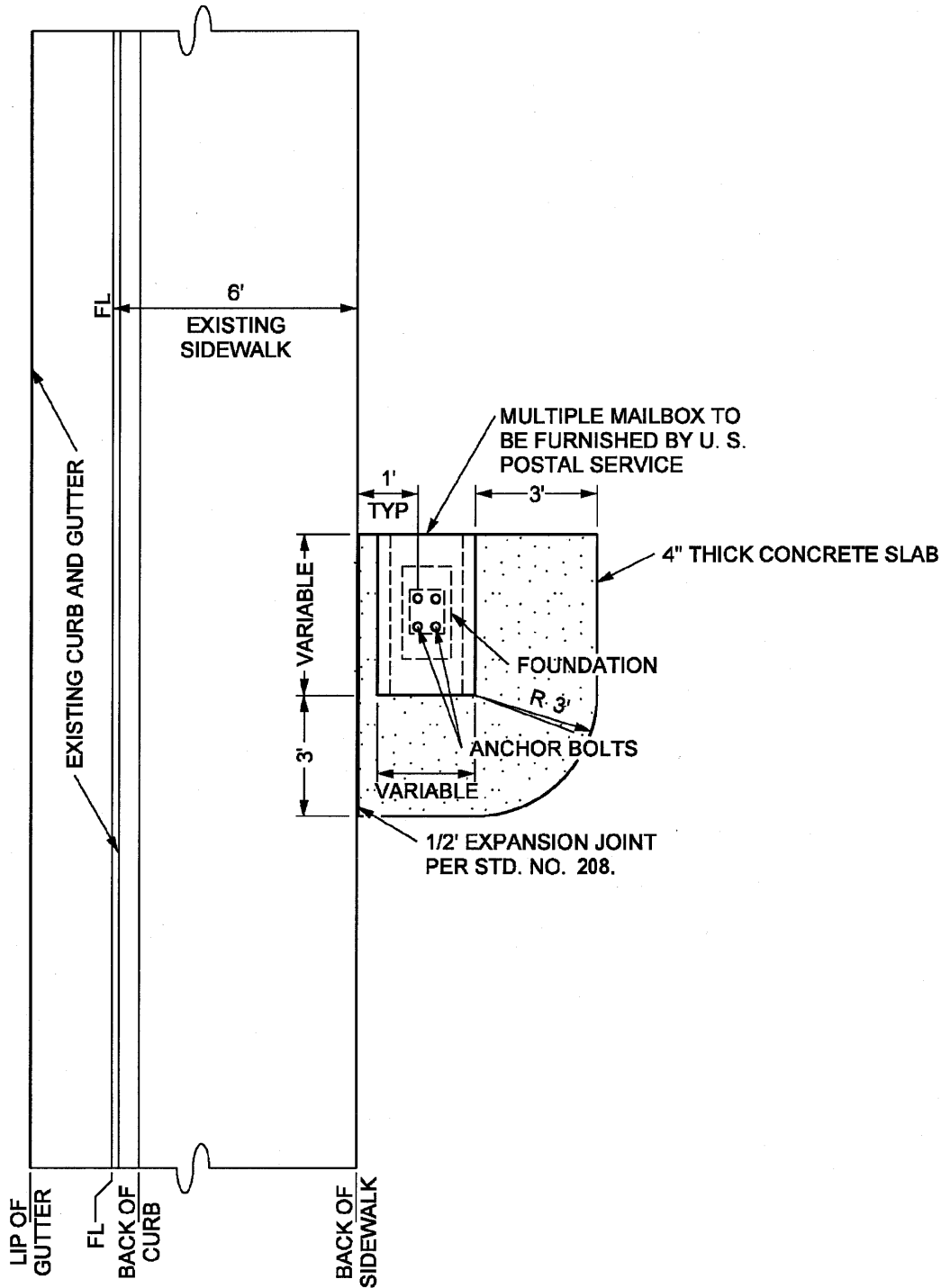


R.C.T.D. STD. No. 813



NOTE:

MAILBOX LOCATION, FOUNDATION ANCHOR BOLTS, AND BOLT HOLES SHALL CONFORM TO SPECIFICATIONS FURNISHED BY THE POSTMASTER. MAILBOX FOUNDATION AND SLAB TO BE A MONOLITHIC POUR.

REVISIONS:

APPROVED 08/21/01
CHRIS A. VOGT CITY ENGINEER RCE 44250



City of La Quinta

**MULTIPLE MAILBOX INSTALLATION
FOR EXISTING SIDEWALK**

STANDARD

631

SHEET 1 OF 1