
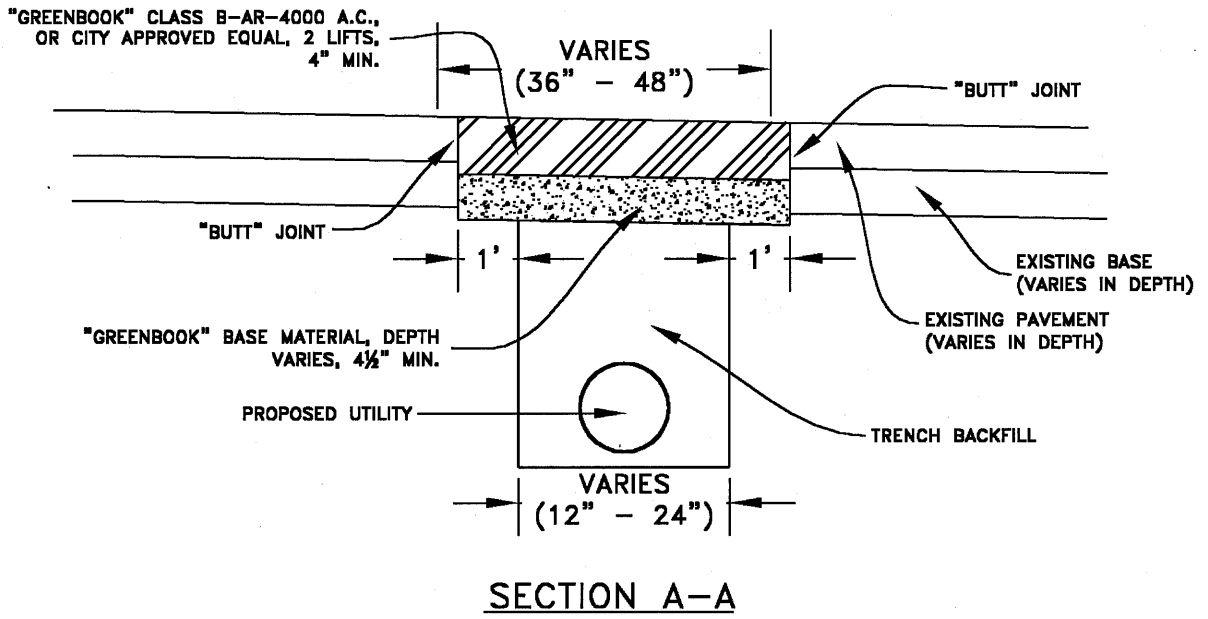
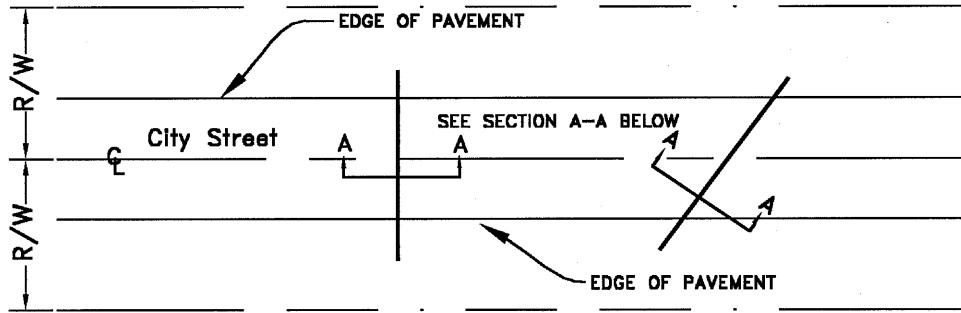


SECTION A-A

REVISIONS:

APPROVED 08/21/01	 <p><i>City of La Quinta</i></p>	STANDARD
CHRIS A. VOGT CITY ENGINEER RCE 44250		600
TRANSVERSE TRENCH BACKFILL & PAVING DETAIL # 1		SHEET 1 OF 7



REVISIONS:

APPROVED
08/21/01

CHRIS A. VOGT
CITY ENGINEER
RCE 44250



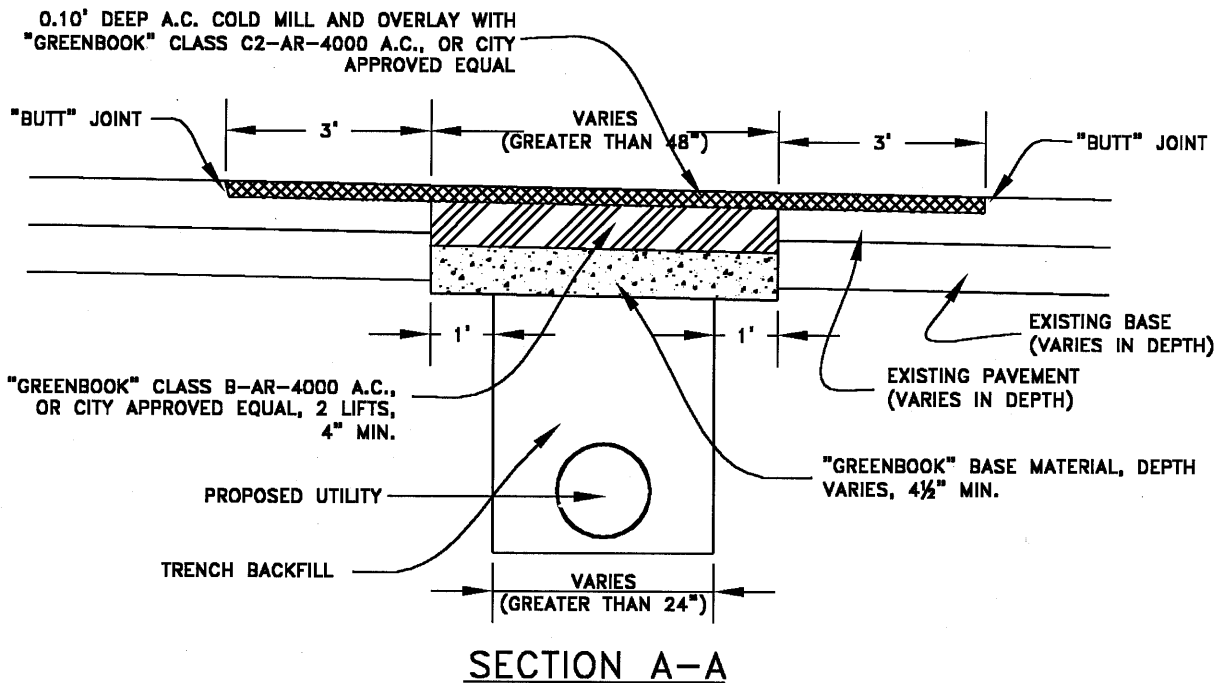
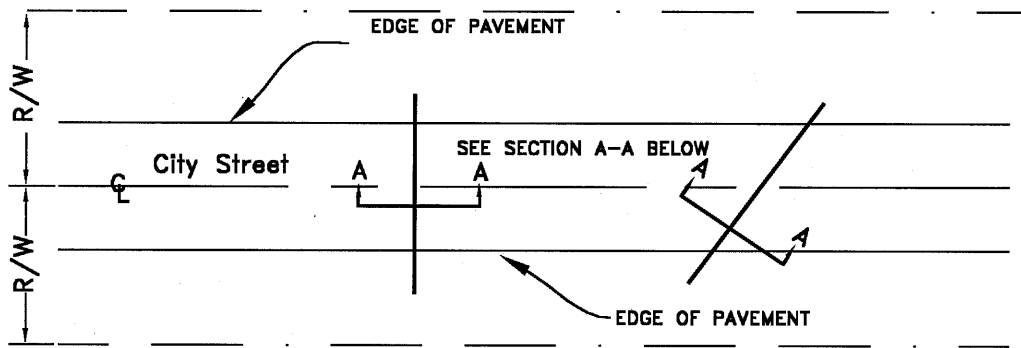
City of La Quinta

**TRANSVERSE TRENCH BACKFILL &
PAVING DETAIL # 2**

STANDARD

600

SHEET 2 OF 7



REVISIONS:

APPROVED
08/21/01

CHRIS A. VOGT
CITY ENGINEER
RCE 44250



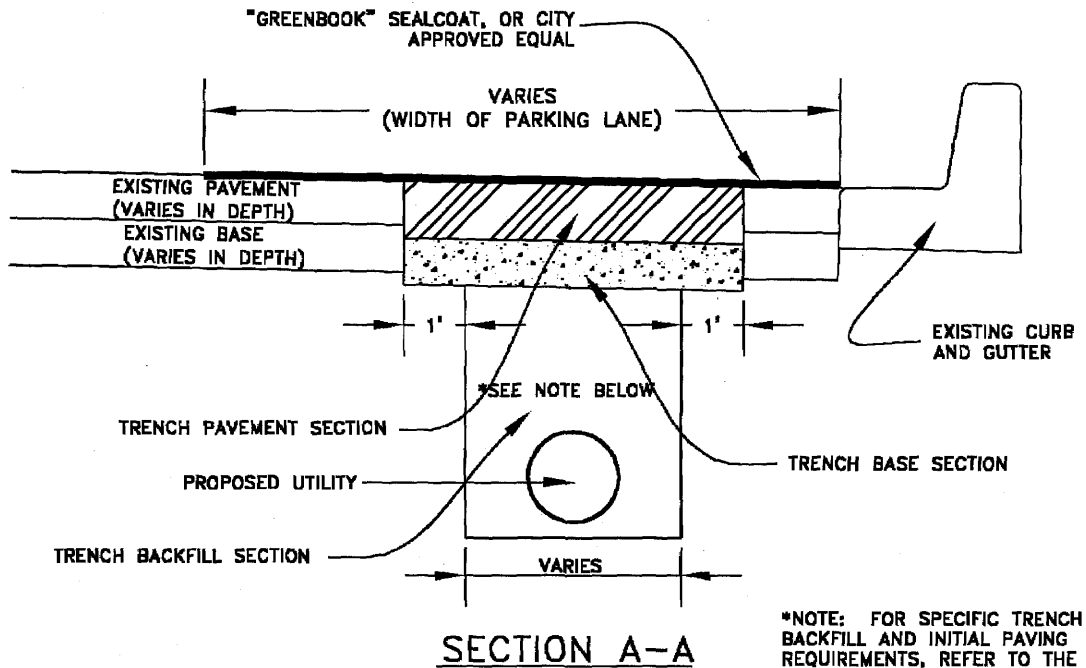
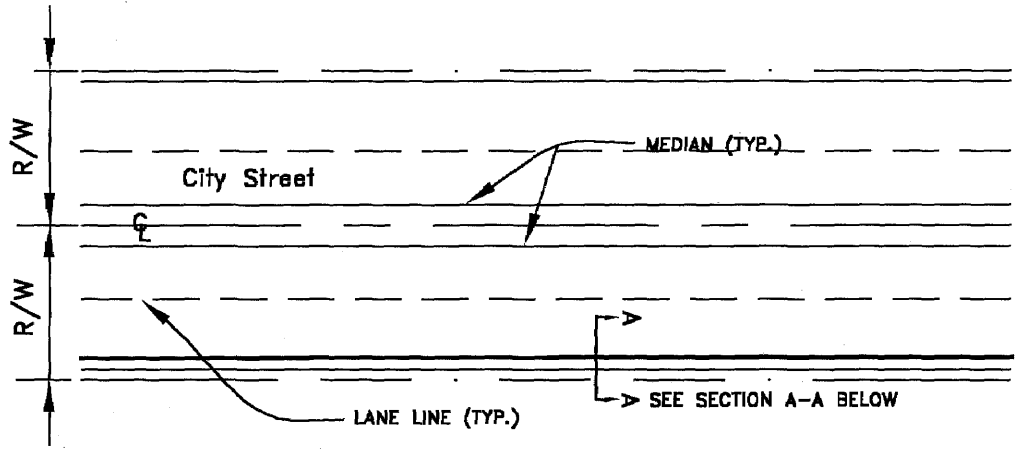
City of La Quinta

**TRANSVERSE TRENCH BACKFILL &
PAVING DETAIL # 3**

STANDARD

600

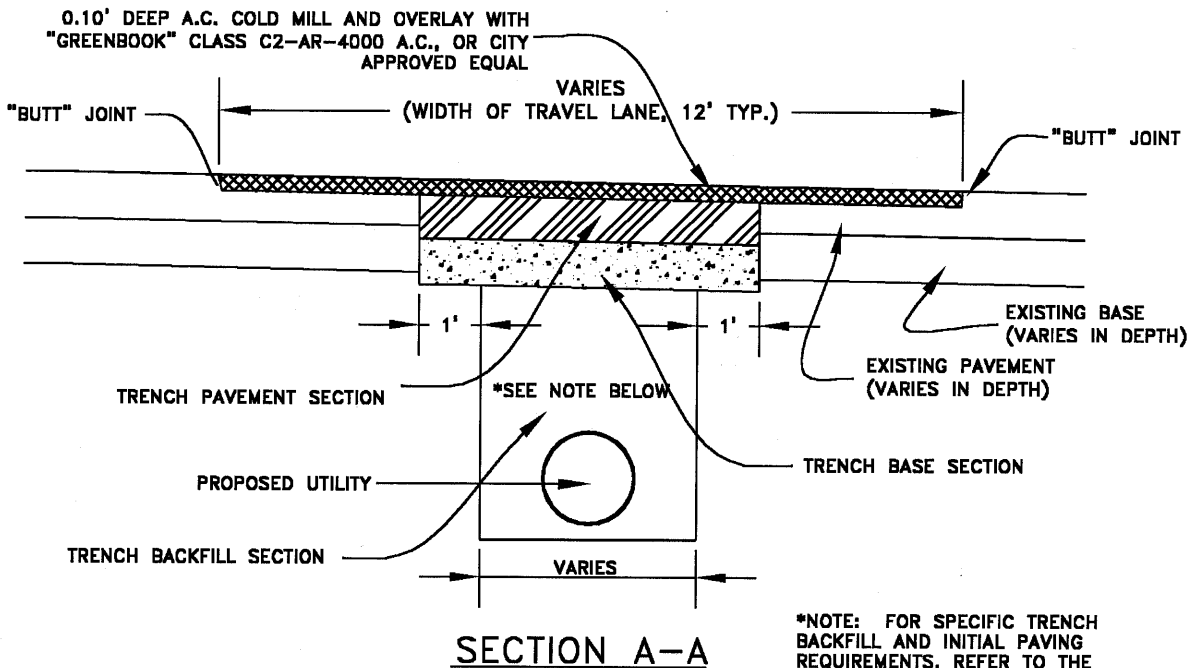
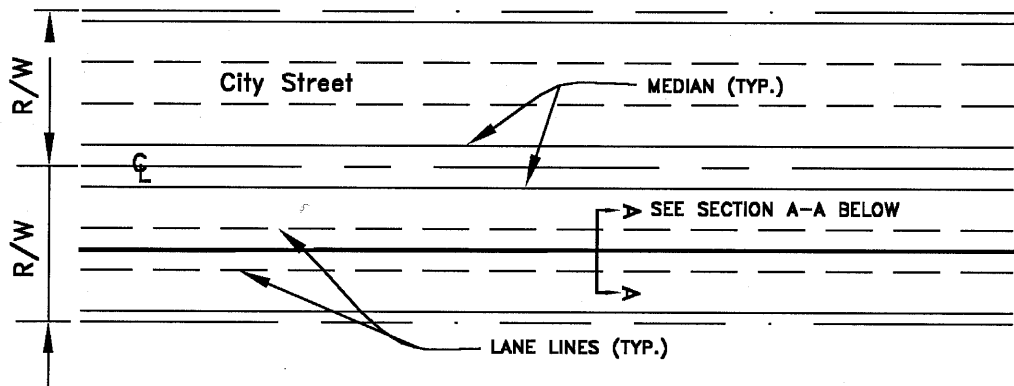
SHEET 3 OF 7



*NOTE: FOR SPECIFIC TRENCH BACKFILL AND INITIAL PAVING REQUIREMENTS, REFER TO THE TRANSVERSE TRENCH BACKFILL AND PAVING DETAILS, AS APPROPRIATE FOR THE TRENCH WIDTH.

REVISIONS:

<p>APPROVED 08/21/01</p>	 <p><i>City of La Quinta</i></p>	<p>STANDARD</p>
<p>CHRIS A. VOGT CITY ENGINEER RCE 44250</p>		<p>600</p>
<p>LONGITUDINAL TRENCH BACKFILL & PAVING DETAIL # 1</p>		<p>SHEET 4 OF 7</p>



***NOTE:** FOR SPECIFIC TRENCH BACKFILL AND INITIAL PAVING REQUIREMENTS, REFER TO THE TRANSVERSE TRENCH BACKFILL AND PAVING DETAILS, AS APPROPRIATE FOR THE TRENCH WIDTH.

REVISIONS:

APPROVED
08/21/01

CHRIS A. VOGT
CITY ENGINEER
RCE 44250



City of La Quinta

**LONGITUDINAL TRENCH BACKFILL
& PAVING DETAIL # 2**

STANDARD

600

SHEET 5 OF 7

TRENCH BACKFILL AND PAVEMENT RESTORATION REQUIREMENTS

(Requirements Vary Based on Excavated Width of Trench)

1. Trenches less than 12" wide (See Detail 1)

(Typically excavated with a rock saw or other similar methods.)

- Backfill Requirements:
 - CDF, or 1-sack slurry backfill ONLY
 - Backfill up to 3" below finish surface of street
 - Testing not required
 - Backfill depth independent of street structural section

- Resurfacing Requirements:
 - 1'-saw cut at trench edge is NOT REQUIRED if trench edges are vertical, straight, and stable.
 - Tack oil coat at edges
 - Paving with 3/8" A.C. material
 - In one lift
 - Depth of 3", flush with finish surface of street
 - Compaction via mechanical vibrating hand compactor or other mechanical means
 - Compaction to 95%
 - Testing not required
 - No grinding or capping with 1/2" A.C. material required

2. Trenches 12" to 24" Wide (See Detail 2)

(Typically excavated with backhoe bucket or other similar methods.)

- Backfill Requirements:
 - CDF or 1-sack slurry backfill (optional)
 - No testing required
 - Native or select material backfill
 - Compaction via special conditions to 90%
 - Backfill depth up to appropriate subgrade elevation
 - Testing required
 - Crushed Aggregate or Crushed Miscellaneous Base material backfill
 - Compaction to 95%
 - Backfill depth up to appropriate base grade elevation (4 1/2" minimum)
 - Testing required
 - Backfill depths dependent upon street structural section

REVISIONS:

APPROVED 08/21/01	 City of La Quinta	STANDARD
CHRIS A. VOGT CITY ENGINEER RCE 44250	TRENCH BACKFILL & PAVEMENT RESTORATION REQUIREMENTS	600
		SHEET 6 OF 7

12" to 24" Trench (continued...)


- Resurfacing Requirements:
 - 1'-saw cut required at trench edges
 - Tack oil coat all saw-cut edges
 - Total section 1" thicker than existing A.C. section (4" minimum)
 - Two, or more, lifts
 - Base Course: 3/4" A.C. material
 - Compaction via vibroplate, tamper, or other mechanical means
 - Compaction to 95%
 - Testing required
 - Finish Paving/Cap Course, 1" Thick: 1/2" A.C. material
 - Compaction via roller
 - Compaction to 95%
 - Testing not required

3. Trenches More Than 24" Wide (See Detail 3)

(Typically excavated with a backhoe bucket or other similar methods.)

- Backfill Requirements:
 - CDF or 1-sack slurry backfill (optional)
 - No testing required
 - Native or select material backfill
 - Compaction via special conditions to 90%
 - Backfill depth up to appropriate sub grade elevation
 - Testing required
 - Crushed Aggregate or Crushed Miscellaneous Base material backfill
 - Compaction to 95%
 - Backfill depth up to appropriate base grade elevation (4 1/2" minimum)
 - Testing required
 - Backfill depths dependent upon street structural section
- Resurfacing Requirements:
 - 1'-saw cut required at trench edges
 - Tack oil coat at all saw-cut edges Base paving with 3/4" A.C. material
 - Total Section 1" thicker than existing A.C. section (4" minimum)
 - Two, or more, lifts
 - Base Course: 3/4" A.C. material
 - Compaction via vibroplate, tamper, or other mechanical means
 - Compaction to 95%
 - Testing required
 - Finish Paving/Cap Course, 0.1' Thick: 1/2" A.C. material
 - Compaction via roller
 - Compaction to 95%
 - Testing not required
 - 3'-grind beyond 1'-saw cut at trench edges
 - Depth of grind to 0.10' below existing finish surface of street (grind after paving base lift)

REVISIONS:

APPROVED 08/21/01		STANDARD
CHRIS A. VOGT CITY ENGINEER RCE 44250		600
	TRENCH BACKFILL & PAVEMENT RESTORATION REQUIREMENTS	SHEET 7 OF 7