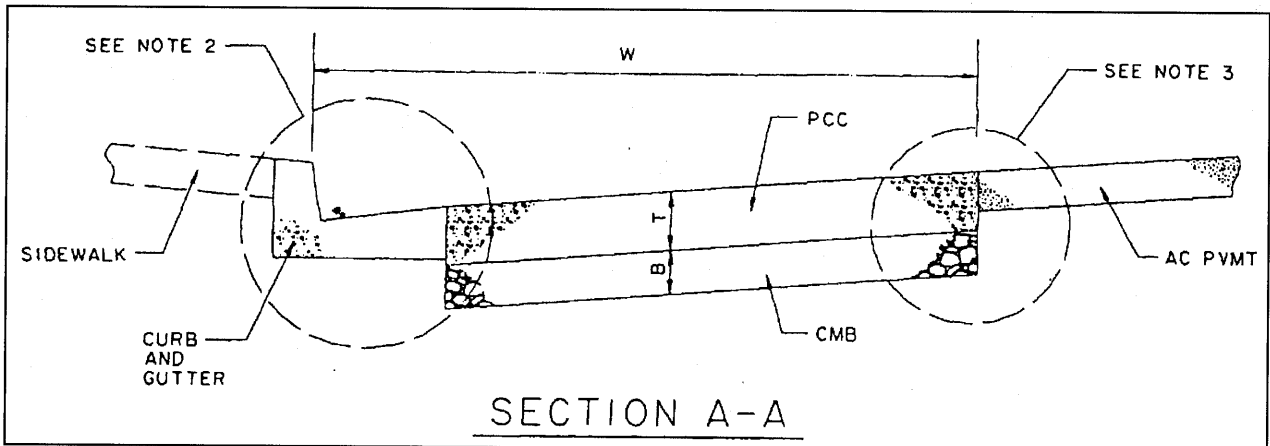
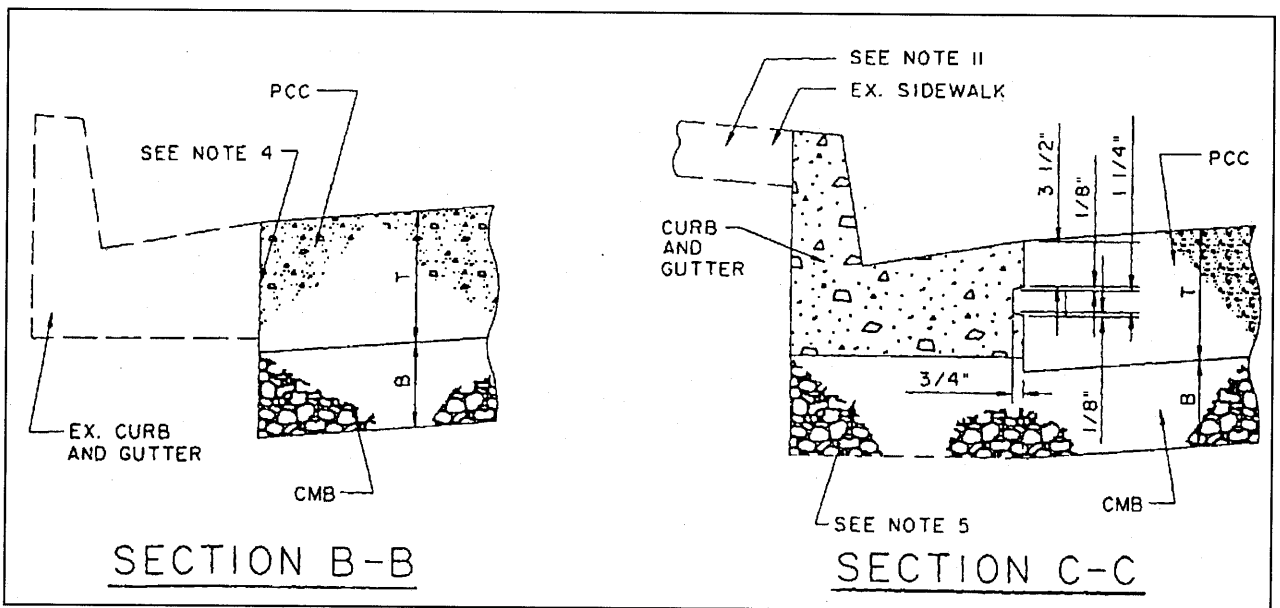


TYPICAL BUS PAD



SECTION A-A



SECTION B-B

SECTION C-C

A.P.W.A. STD. No. 131-0

REVISIONS:

APPROVED  
08/21/01

CHRIS A. VOGT  
CITY ENGINEER  
RCE 44250



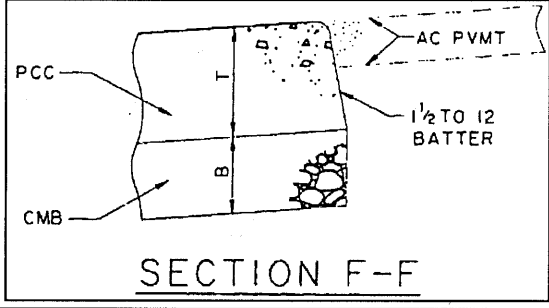
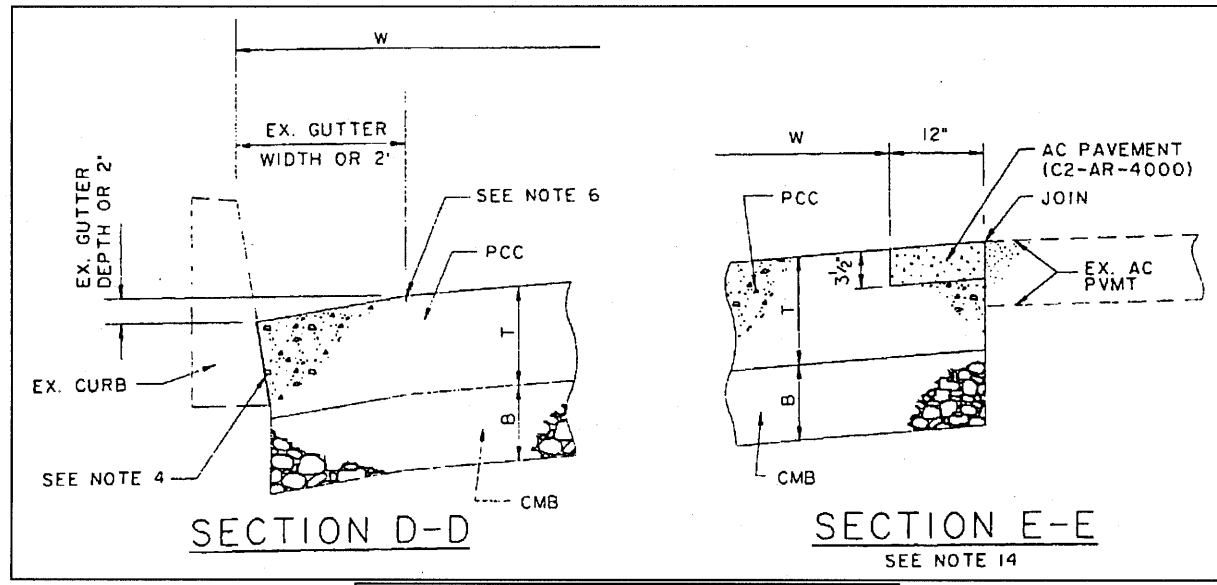
City of La Quinta

CONCRETE BUS PAD

STANDARD


420

SHEET 1 OF 2



- NOTES:
- DIMENSIONS: (UNLESS OTHERWISE SHOWN)  
 $L = 85'$        $T = 8"$   
 $W = 10'$        $B = 6"$
  - USE SECTION B-B FOR EXISTING CURB AND GUTTER THAT IS TO REMAIN  
 USE SECTION C-C FOR NEW CURB AND GUTTER  
 USE SECTION D-D FOR EXISTING CURB THAT IS TO REMAIN
  - USE SECTION E-E FOR EXISTING AC PAVEMENT  
 USE SECTION F-F FOR NEW AC PAVEMENT
  - AT LOCATIONS WHERE PCC PAVEMENT WILL BE ABUTTING AGAINST EXISTING CONCRETE, AN EPOXY, APPROVED BY THE ENGINEER, SHALL BE APPLIED TO THE EXISTING CONCRETE SURFACES PRIOR TO CONCRETE PLACEMENT.
  - IF  $B + T$  IS EQUAL TO OR GREATER THAN 12", CMB SHALL EXTEND UNDER NEW CURB AND GUTTER.
  - CONSTRUCT LONGITUDINAL WEAKENED-PLANE JOINT TO MATCH ADJOINING EXISTING GUTTER WIDTH, OR 2' IF NO ADJOINING GUTTER EXISTS.
  - USE 2"x4" HEADER TO FORM 3-1/2 INCH STEP. TOP OF HEADER SHALL BE SET TO LINE AND GRADE.
  - ALL EXPOSED PCC CORNERS TO BE ROUNDED WITH A 1/2' RADIUS.
  - SURFACE OF CONCRETE SHALL HAVE A ROUGH TRANSVERSE BROOM FINISH.
  - WHERE DESIGNATED BY THE ENGINEER, UNDESIRABLE SUBGRADE MATERIAL SHALL BE REMOVED AND REPLACED WITH CMB.
  - WHERE NEW CURB AND GUTTER IS CONSTRUCTED ADJACENT TO EXISTING SIDEWALK, SIDEWALK SHALL BE REMOVED AND REPLACED TO NEAREST SCORELINE.
  - CONSTRUCT TRANSVERSE WEAKENED-PLANE JOINTS IN BUS PAD PAVEMENT AT APPROXIMATELY 10' INTERVALS.
  - CONSTRUCT TRANSVERSE WEAKENED-PLANE JOINTS IN BUS PAD PAVEMENT AT ALL EXISTING CURB/CURB & GUTTER CONSTRUCTION JOINTS AND OR WEAKENED-PLANE JOINTS.
  - AT THE OPTION OF THE ENGINEER, THE EXISTING PAVEMENT MAY BE NEATLY SAWCUT AROUND THE DIMENSIONS OF THE BUS PAD AND CONCRETE IS POURED DIRECTLY USING THE EXISTING PAVEMENT AS A FORM. THE CONCRETE EDGES SHALL BE ROUNDED WITH A 1/2' RADIUS.

A.P.W.A. STD. NO. 131-0

|                                             |                                                                                                                 |                         |  |
|---------------------------------------------|-----------------------------------------------------------------------------------------------------------------|-------------------------|--|
| REVISIONS:                                  |                                                                                                                 |                         |  |
| APPROVED<br>08/21/01                        | <br><i>City of La Quinta</i> | STANDARD                |  |
| CHRIS A. VOGT<br>CITY ENGINEER<br>RCE 44250 |                                                                                                                 | 420                     |  |
|                                             |                                                                                                                 | <b>CONCRETE BUS PAD</b> |  |
|                                             |                                                                                                                 | SHEET 2 OF 2            |  |