



# City of La Quinta

TO: Community Services Commission

FROM: Christina Calderon, Community Services Supervisor

DATE: October 13, 2014

SUBJECT: Update of Senior Center Expansion and Facility Renovation

---

The expansion and renovation of the Senior Center is a part of the City Council's vision to expand the Health and Wellness services in the community. The building improvements include:

- The expansion of approximately 5,900 sq. ft. of new recreation space.
- The development of a fitness area with cardiovascular and strength training equipment.
- Classroom space for fitness classes and other leisure enrichment programs.
- Updated reception area with increased visibility of customers.
- Implement Wi-Fi; update the finishes and furnishings in the existing building, and complete the ADA requirements.
- Enhance the outdoor terrace areas with improved seating, shade, and herb and small vegetable gardens that users will maintain.

This project is part of the 2013/2014 Capital Improvement Program. City Council has selected the Design-Build Team of Pearson Architects/Doug Wall Construction to design and build the facility. Renderings of the schematic design plans are included as Attachment 1.

A design build contract is in place for just over \$3 million dollars. Funding is from the Community Center Development Impact Fee (DIF) Fund and Quimby funds.

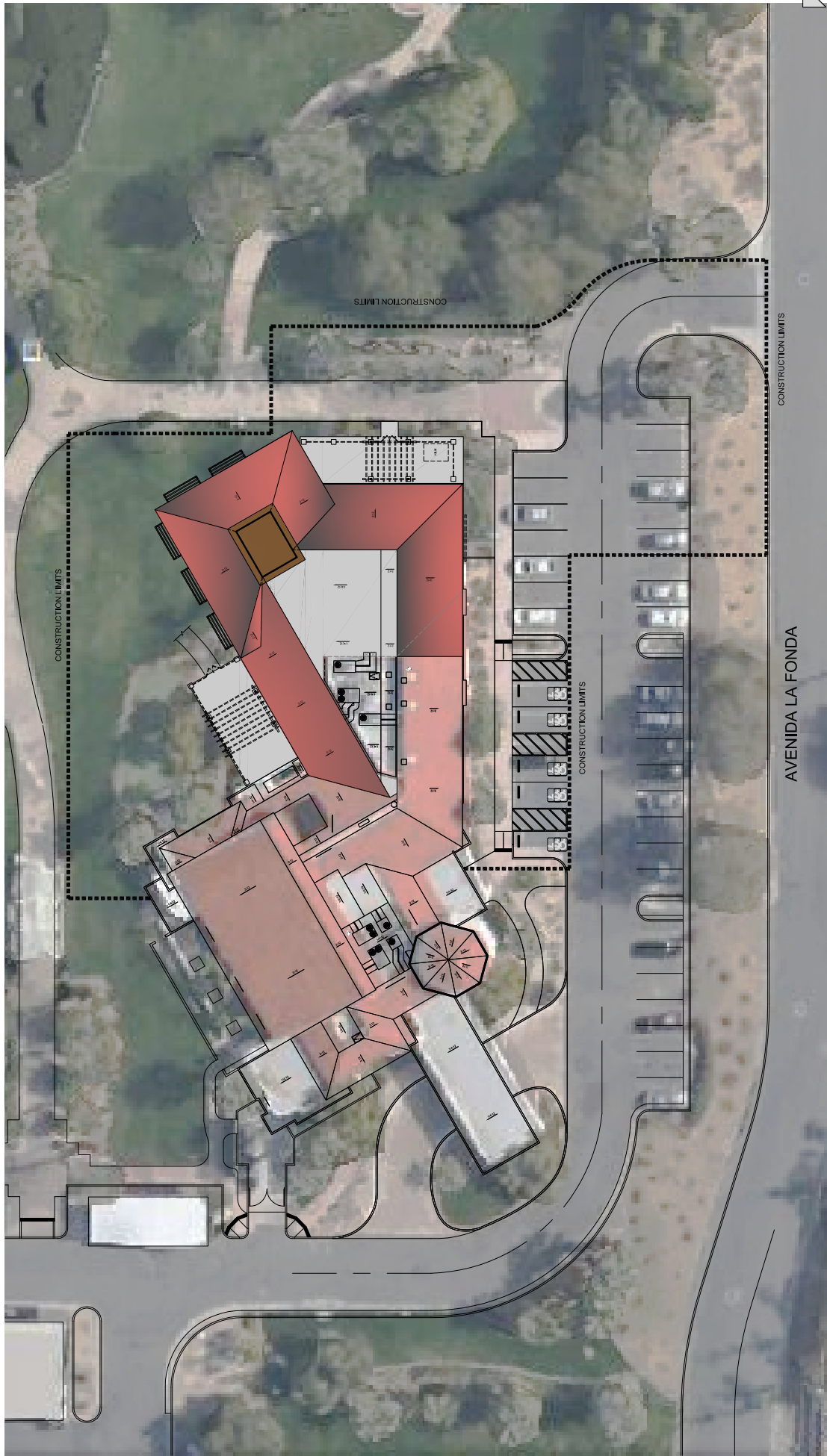
The Senior Center, built in 1994, serves adults in the community with programs in the areas of health and wellness, social services, and leisure activities. Programs for seniors will continue during the morning hours when the facility reopens. All classes and programs are open to participants 18 years of age and older. The average participant age range is 50 to 65 during the daytime hours. Staff anticipates more adults of all ages will use the fitness and aerobic areas during the morning and evening hours. Staff will be trained on all fitness equipment and will

be able to assist participants on the use of the equipment. Memberships will be sold for use of the fitness facility and fees will be taken to City Council for consideration.

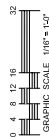
The Community Services department currently provides programs at the Center for the general public in the evenings Monday through Thursday. Wellness programs are planned for youth after school, on weekends and during the day in the summer. Expanding in the areas of the culinary arts and nutrition, gardening, technology, and physical, mental and social well-being will create a facility with options for everyone in the community. Partnering with agencies such as Eisenhower and JFK will allow for additional wellness opportunities for people with therapeutic needs.

In January 2015 the new facility will have a change in hours of operation. Monday through Friday the center will open at 5:30 a.m. and close at 9 p.m. On Saturdays the fitness center will open at 8 a.m. and close at 12 p.m. When the rooms in the facility are not in use for city services they will continue to be rented for public and private functions.

Attachment:            1. Center Renderings/Photos



PROPOSED SITE PLAN  
SCALE: 1/16"=1'-0"



CONSTRUCTION STAGING LIMITS

# LA QUINTA COMMUNITY HEALTH AND WELLNESS CENTER

78-450 AVENIDA LA FONDA LA QUINTA, CALIFORNIA



DEBENSON ARCHITECTS, INC.  
ARCHITECTURE PLANNING WATERFORD DESIGN  
18250 Newport 111, Suite 200, Irvine, CA 92614-1111

PRELIMINARY - NOT FOR CONSTRUCTION  
SCALE: AS NOTED 01/02/14

AVENIDA LA FONDA














**PLANT LIST**




SYMBOL QTY. BOTANICAL NAME COMMON NAME SIZE

**TREES & PALMS**

	2	ACACIA ANERA	'MULGA'	24' BOX SINGLE STD.
	1	THEVETIA PERUVIANA	'JAPANESE OLEANDER'	24' BOX MULTI-TRK.

**SHRUBS & ACCENTS**

	10	HEPERALOE PARVIFLORA	'RED TIPPED YUCCA'	5 GAL.
	10	CALLISTEMON VIMINALIS 'LITTLE JOHN'		5 GAL.
	10	CARISSA 'BOXWOOD BEAUTY'		5 GAL.
	17	ROSA 'ICEBERG'		5 GAL.
	4	TECOMA STANS	'YELLOW BELLS'	5 GAL.
	4	XYLOPIA CONVESSTUM 'COMPACTA'		5 GAL.
	6	BOUGAINVILLEA 'DO LA LA'		5 GAL.
	3	CARISSA 'TUTTLE'		5 GAL.
<b>GROUNDCOVER &amp; VINES</b>				
	14	LANTANA	'NEW GOLD'	5 GAL.
	9	LANTANA MONTEVIDENSIS	'PURPLE'	5 GAL.
	7	CARISSA 'GREEN CARPET'		5 GAL.
	14	FESTUCA SLAUCA	'BLUE FESCUE'	1 GAL.
	4	DURANTA REPENS	'SKY FLOWER'	5 GAL. STK.
	3	CALLIANDRA HAEMATOCEPHALA 'PINK POWDER PUFF'		5 GAL. STK.
	225	ANNUAL COLOR	TED BY SEASON	6 PK @ 12" O.C.

	4150 S.F.	3/8" DIA DECOMPOSED GRANITE LAID OVER NEED CLOTHE
	2170 S.F.	LAWN SOD WITH BERMUDA OVERSEED
	9220 S.F.	PUTTING GREEN (1560 PUTTING, 6660 CHIPPING)



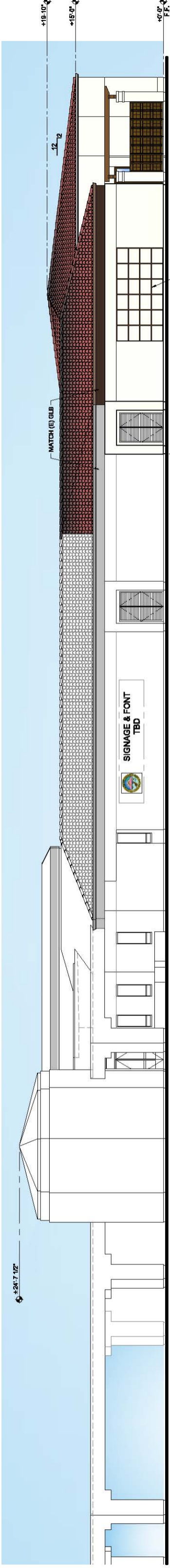
**LA QUINTA HEALTH & WELLNESS CENTER**  
78-450 AVENIDA LA FONDA, LA QUINTA, CA



HERMANN DESIGN GROUP  
77-772 FLORA ROAD  
SUITE 101  
PALM BEACH, FL 33411  
LIC# 2354 EXP 06/30/14  
PH: (561) 777-9131  
FAX: (561) 777-9132

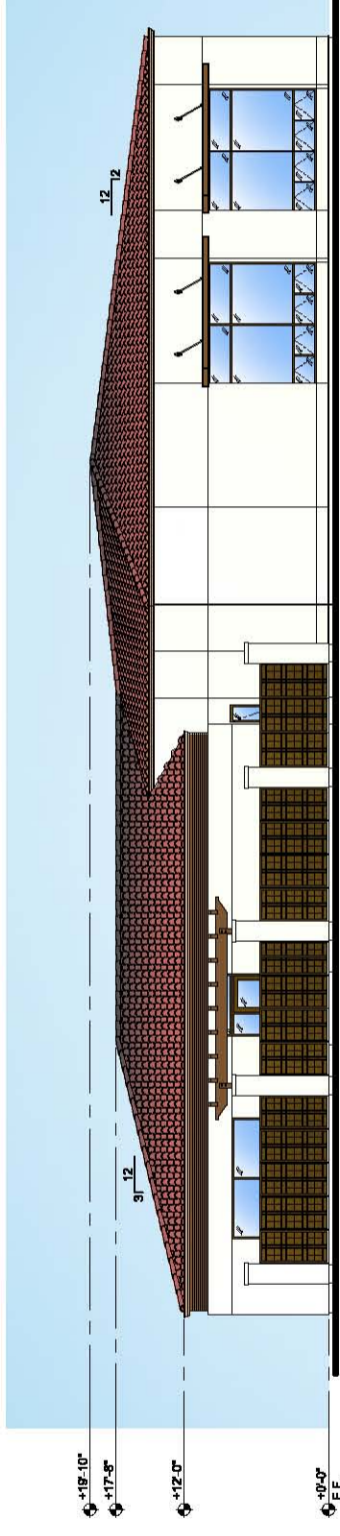


DATE: 01/08/14



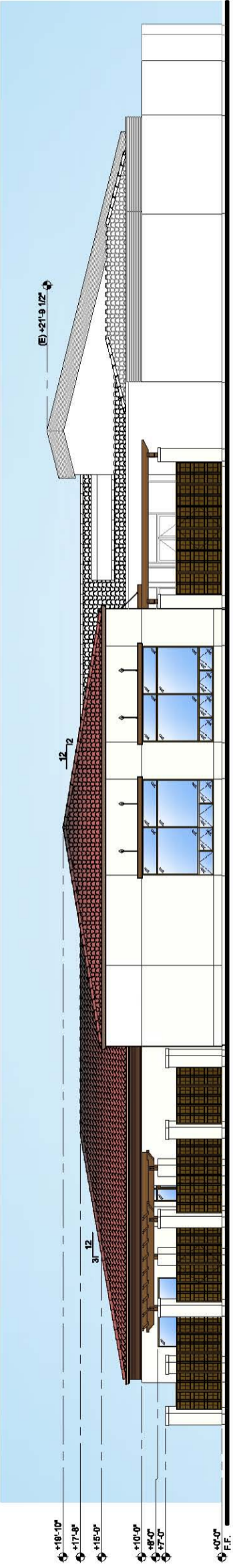
**SOUTH ELEVATION (FROM LA FONDA)**

SCALE: 1/8" = 1'-0"



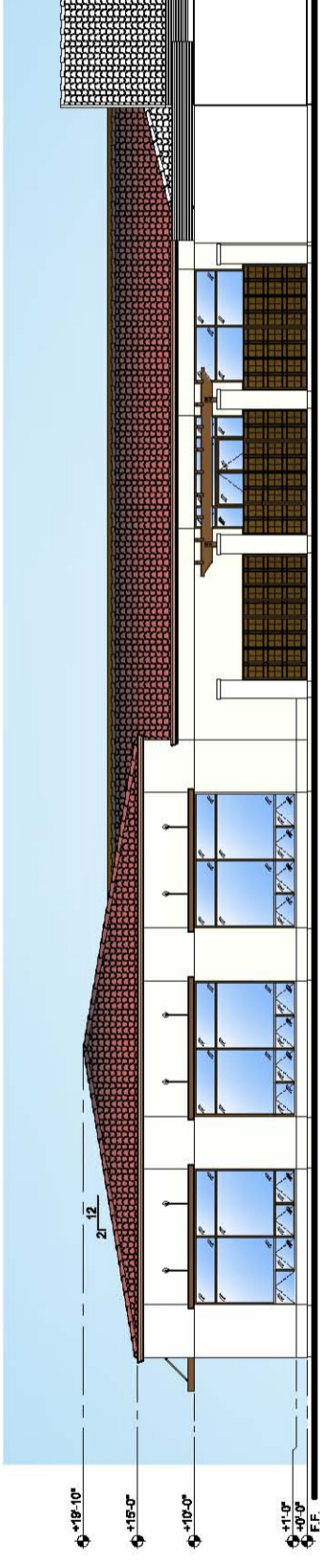
**EAST ELEVATION (FROM PARK ENTRY WALK)**

SCALE: 1/8" = 1'-0"



**NORTH EAST ELEVATION (FROM PARK)**

SCALE: 1/8" = 1'-0"



**NORTH WEST ELEVATION (FROM PARK)**

SCALE: 1/8" = 1'-0"

# LA QUINTA COMMUNITY HEALTH AND WELLNESS CENTER

78-450 AVENIDA LA FONDA LA QUINTA, CALIFORNIA

