



City of La Quinta

COMMISSION MEETING DATE: March 9, 2015

ITEM TITLE: DISCUSSION OF SKATE PARK DESIGNS
ACROSS FROM FRITZ BURNS PARK AND AT LA
QUINTA PARK

AGENDA CATEGORY:

BUSINESS SESSION:

CONSENT CALENDAR:

STUDY SESSION: 1

PUBLIC HEARING:

RECOMMENDED ACTION:

Staff is seeking feedback from the Commission on the development of a new skate park across from Fritz Burns Park and to improve the La Quinta Skate Park with prefabricated concrete skate structures.

EXECUTIVE SUMMARY:

- The skate parks at La Quinta Park and Fritz Burns Park are in need of repairs and replacement.
- There is community interest for additional tennis and pickle ball courts at Fritz Burns Park.

FISCAL IMPACT:

The cost estimate to construct the new skate park across from Fritz Burns Park is being developed and based on the skate park selected. The cost estimate (Attachment1) to improve the La Quinta Park skate area is \$50,000. Quimby funding would be used for these improvements if approved.

BACKGROUND/ANALYSIS:

During the January 6, 2015 City Council Meeting, Council Member Osborne noted that the City skate parks are in need of maintenance. He asked staff to explore improving the conditions of the facilities and bring it to the Community Services Commission for their feedback.

Fritz Burns Park

The Fritz Burns skate park was originally two tennis courts from the former Desert Club Resort property. The City received the Desert Club property as a donation from the Burns Family. The property was developed into Fritz Burns Park in 1994. Two of the tennis courts were converted into a roller hockey facility and then later converted into a skate park. The metal skate structures of the skate park need to be replaced because of heavy use and vandalism. Additionally, the concrete needs to be replaced because of surface failures.

Since the establishment of the Fritz Burns skate park, the skate park users and tennis court users have been occupying the same area with a shared lighting system. These two recreational activities are often in conflict. Building a new skate park facility across from Fritz Burns Park will separate these activities, allow for an additional tennis court and two pickle ball courts, and provide the skate park users a new and more functional facility. If the skate park is relocated, staff would prepare a separate project and request funding for the additional tennis/pickle ball courts.

Staff researched skate park designs, construction, and management. Spohn Ranch is an experienced skate park design and construction company that was used to develop facilities for the X Games. They provided the City with three concept designs for the City owned parcel located on the northeast corner of Avenida Bermudas and Avenue 52.

- Design 1 is 12,000 square feet = \$500,000 (Attachment 1)
- Design 2 is 20,000 square feet = \$1,000,000 (Attachment 2)
- Design 3 is 25,000 square feet = \$1,500,000 (Attachment 3)

Staff believes that Design 3 is too costly and may be too large for a facility adjacent to a neighborhood. Once a design is selected, Spohn Ranch will work with the City to create a custom design with similar size and features that will fit the property. Many municipalities have worked with this company because of their ability to sole source the project through the HGAC Program. The HGAC program is a nationwide government procurement service.

There are also additional costs for the new skate park that will include lighting, parking, fencing, and possibly a concession/restroom building.

La Quinta Park

The skate facility at La Quinta Park was a component of the original park construction in 2002. It features both metal skate structures and a popular concrete bowl. The metal structures are in need of replacement because of heavy use and vandalism. Spohn Ranch can replace metal skate structures with prefabricated concrete structures (Attachment 4) that are seamlessly installed into existing facilities. The cost estimate for this improvement is \$50,000.

There are also additional cost for the facility improvement that will include fencing and possibly a concession/restroom facility.

Operations

It was requested by Council that staff explore the cost and benefits of charging an entrance fee with the resulting revenue being used for staffing and maintenance.

Currently, decisions need to be made about the improvements and construction of the skate parks before the staffing and user fees can be considered by the Commission.

Staff has researched options for providing on-site management of the skate park facilities. The City of Palm Springs contracts its skate park management services. The advantages to outsourcing the management include; insurance, trained staff, retail operations, reduced liability, maintenance, and providing operational hours with supervision. The on-site supervision is an important factor because most of the skate park complaints are related to graffiti/vandalism, drug/alcohol use, and use/safety.

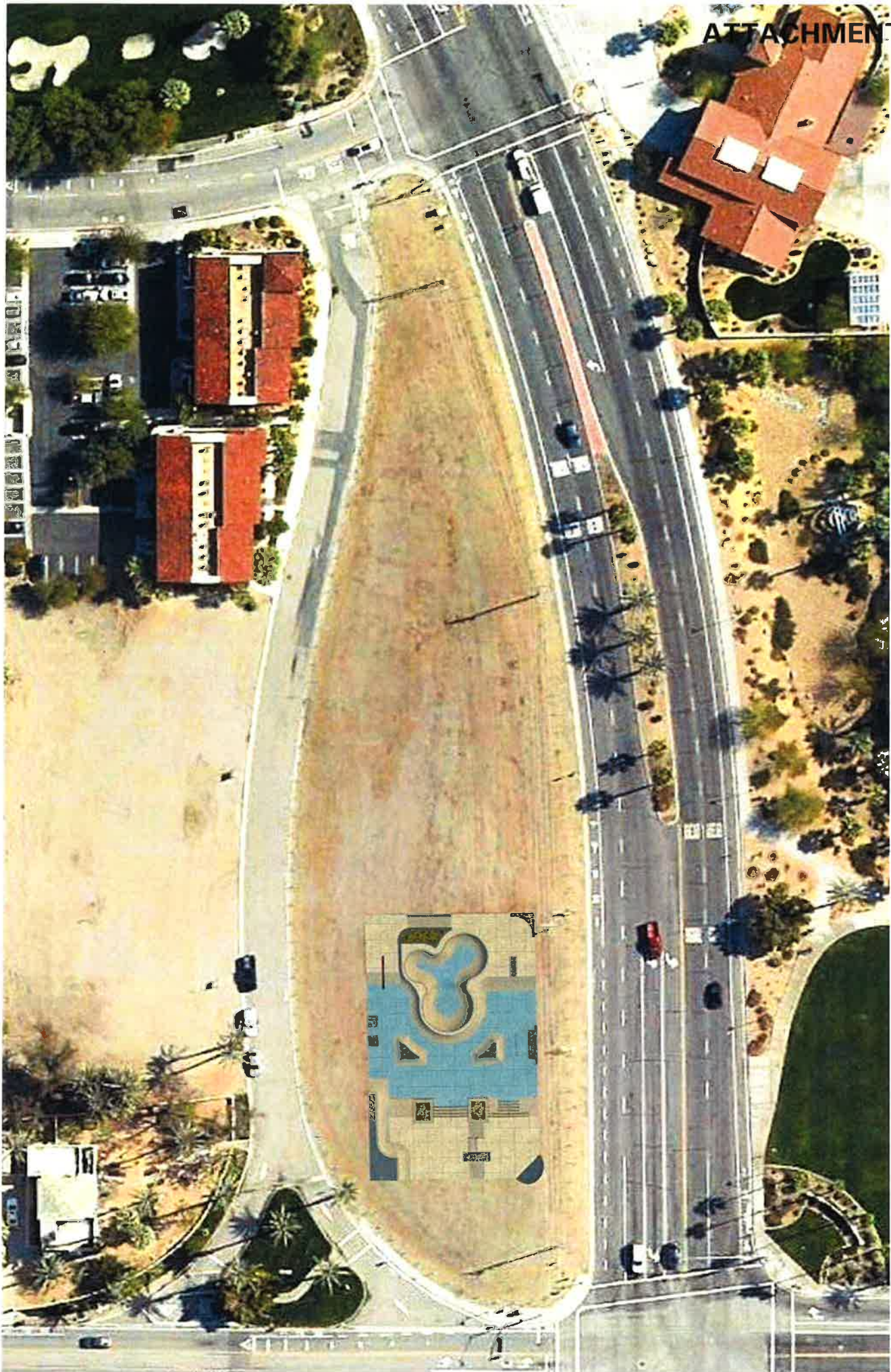
On-site management will cost approximately \$100,000 per year for each facility. It will also require additional construction costs for a concession building with restrooms and fencing.

ALTERNATIVES:

Staff is seeking feedback on the skate park designs to present to City Council.

Report prepared and approved for submission by: Steve Howlett, Golf, Parks, & Facilities Manager

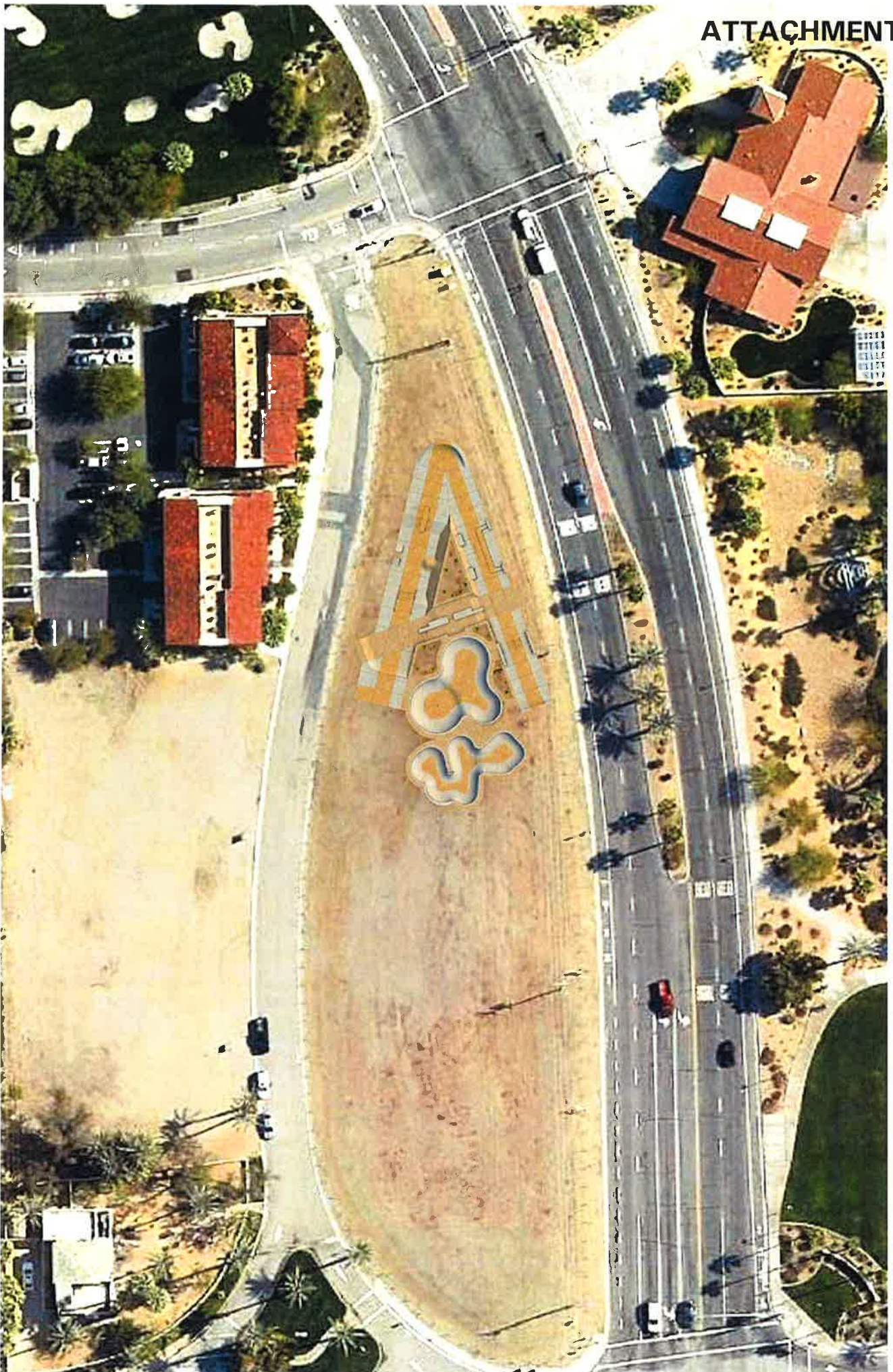
- Attachments:
- 1. Fritz Burns Park Design 1
 - 2. Fritz Burns Park Design 2
 - 3. Fritz Burns Park Design 3
 - 4. La Quinta Park Design





SAMPLE SKATEPARK CONCEPT DESIGN - SR-015-02







SAMPLE SKATEPARK CONCEPT DESIGN - SR-018-02

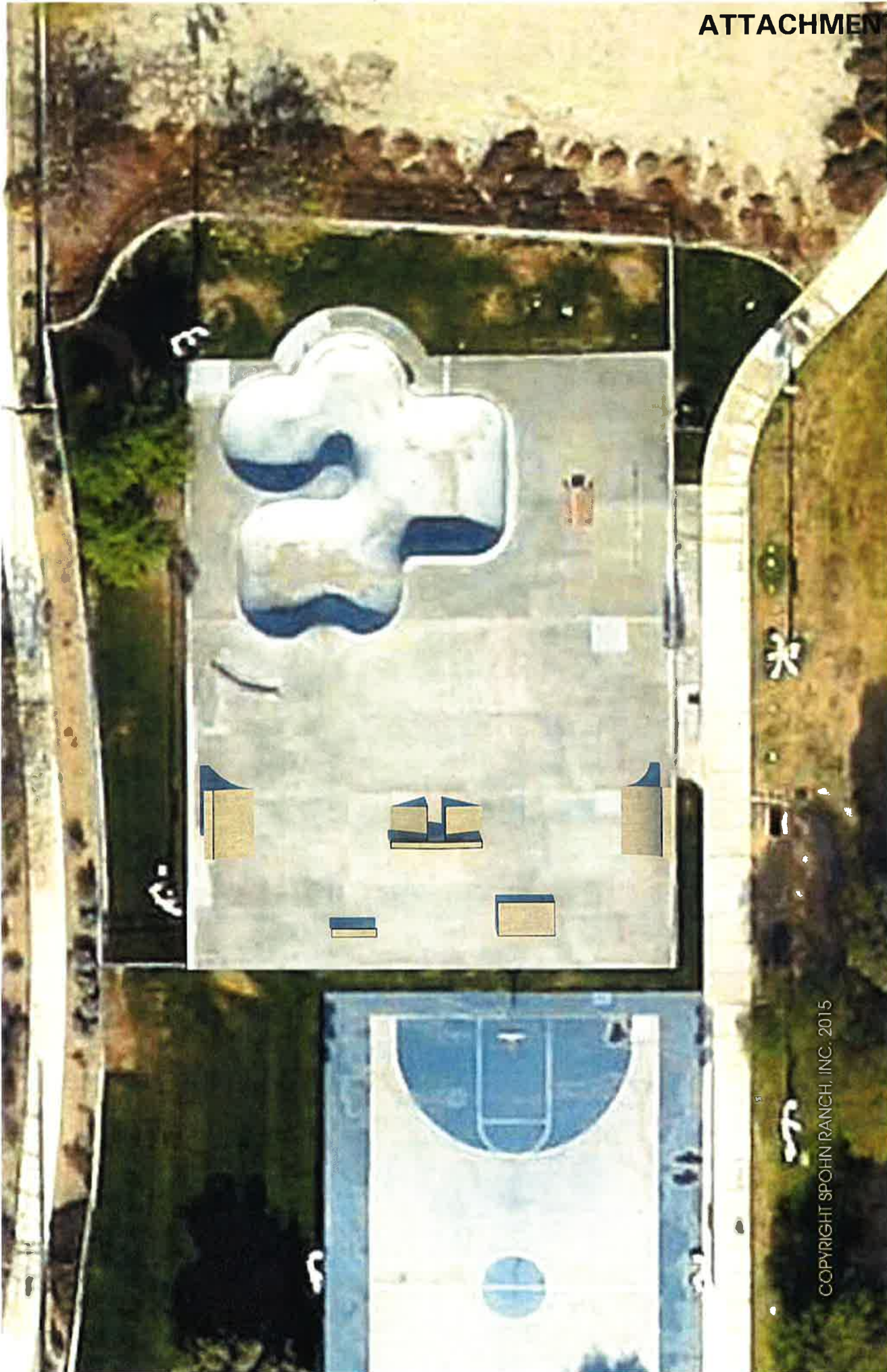






SAMPLE SKATEPARK CONCEPT DESIGN - SR-040-02

SR SPOHN RANCH
SKATEPARKS



COPYRIGHT SPOHN RANCH, INC. 2015



COPYRIGHT SPOHN RANCH, INC. 2015