

# City of La Quinta

COMMUNITY SERVICES COMMISSION MEETING October 12, 2015

## DEPARTMENT REPORT

TO: Community Services Commission

FROM: Edie Hylton, Deputy City Manager

DATE: October 20, 2015

SUBJECT: SEELEY ART UPDATE

---

Staff is updating the Commission on the art piece for the Seeley roundabout.

The cost of the art piece is \$90,000 to be funded through the Art in Public Places Fund. Additional APP funds will be used for the surrounding landscape.

At the February 9, 2015 Community Services Commission meeting, four proposals were considered. Discussions by the Commission included previous experience and a realistic portrayal of the themes. Artist Jane Dedecker was selected by the Commission for her extensive experience and the quality of her work. This artwork (Attachment 1) was approved for recommendation to the City Council by a three to one vote. The opposing voter wanted to issue another RFP to seek artwork more specific to La Quinta.

The art piece entitled "On the Count of Three," stands approximately six feet tall and three feet wide and will be placed in the center of the Seeley Drive roundabout (Attachment 2) surrounded by native plant material. The sculpture features a Father and Mother swinging a child with a dog walking by their side.

On May 5, 2015, City Council approved the Approve an Art Purchase Agreement with Jane Dedecker and National Sculptors Guild for the design and installation of a sculpture at the Seeley Drive roundabout

The sculpture is currently being cast. Staff is working with the representatives from the National Sculptors Guild to install the landscape and foundation for the art piece (Attachment 3). The landscape will require the removal of one of the three Date Palms and the installation of a flagstone walkway. Staff is working with the City's Traffic Engineer to improve the signage around the perimeter of the roundabout.

A dedication ceremony will be scheduled after the project is completed. Staff is expecting completion by the end of November 2015.





Possible Customizations



Puppy



Floral Bouquet



Patina variation

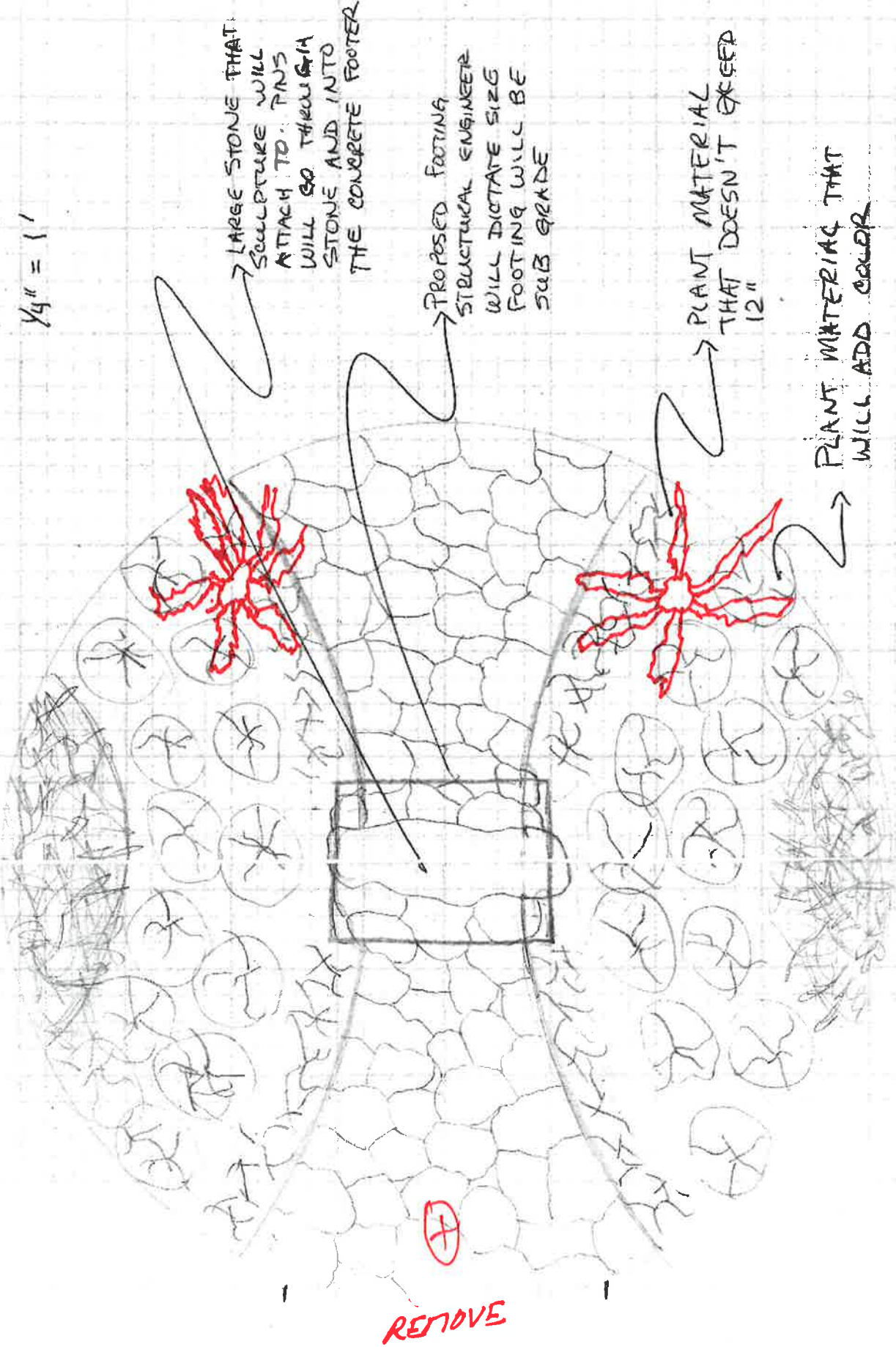


N  
W + E  
S



LAQUINTA  
SEELEY DRIVE  
ROUNDABOUT

1/4" = 1'



LARGE STONE THAT  
SCULPTURE WILL  
ATTACH TO. PINS  
WILL GO THROUGH  
STONE AND INTO  
THE CONCRETE FOOTER

PROPOSED FOOTING  
STRUCTURAL ENGINEER  
WILL DICTATE SIZE  
FOOTING WILL BE  
SUB GRADE

PLANT MATERIAL  
THAT DOESN'T GREED  
12"

PLANT MATERIAL THAT  
WILL ADD COLOR

REMOVE